

# MONTHLY MEMBERSHIP PROGRESS REPORT

LOCATION INDIA

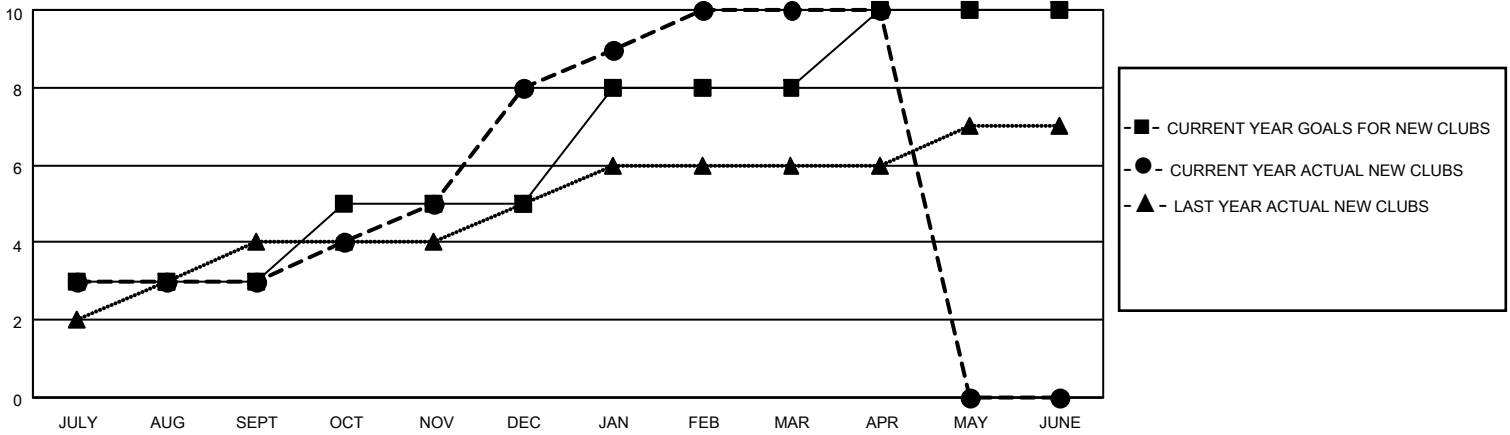
District 324A1

Results as of: 4/30/2021

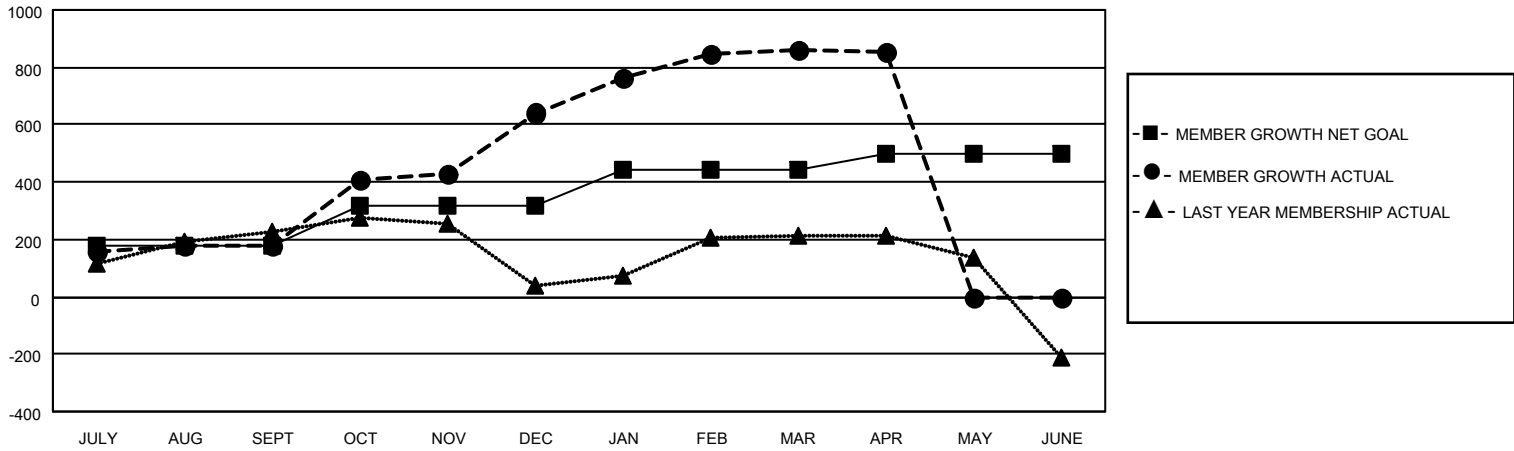
Clubs			
RESULTS FOR 2020-2021			
QUARTER	NEW CLUB GOAL	NEW CLUBS	DROPPED CLUBS
JULY/AUG/SEPT	3	3	0
OCT/NOV/DEC	2	5	0
JAN/FEB/MAR	3	2	4
APR/MAY/JUNE	2	0	0

Members			
RESULTS FOR 2020-2021			
QUARTER	MEMBER GROWTH NET GOAL	MEMBER GROWTH ACTUAL	DROPPED MEMBERS ACTUAL (including transfers)
JULY/AUG/SEPT	180	336	144
OCT/NOV/DEC	140	701	230
JAN/FEB/MAR	120	352	119
APR/MAY/JUNE	60	28	33

**GOALS AND ACTUAL NEW CLUBS CUMULATIVE**



**GOALS AND ACTUAL MEMBERS CUMULATIVE**



**DROPPED CLUBS: 4**

135 CLUBS OF 189 ADDED 1 OR MORE NEW MEMBERS

**GENDER DISTRIBUTION**

MALE 4,545 (73.09%)  
FEMALE 1,673 (26.91%)

**DROPPED MEMBERS**

DECEASED	44
CLUB CANCELLED	55
OTHER	427
<b>TOTAL</b>	<b>526</b>

[CLICK HERE FOR CUMULATIVE MEMBERSHIP DATA](#)

TOTAL FAMILY UNIT MEMBERS	2,206
FAMILY MEMBERS PAYING HALF DUES	1,235